

Ras(G13D)

Catalog Number: 26038

Gene Symbol: RAS (G13D)

Description: Anti-Ras (G13D) Mouse Monoclonal Antibody

Background: K-Ras G13D mutation, which occur at codons 13, prevent efficient GTP hydrolysis and thus render the proteins in an activated state. As a result, multiple Ras effector pathways which control fundamental biological processes such as proliferation, apoptosis, and cell motility become constitutively activated and/or deregulated. K-Ras (G13D) is involved in tumor initiation and progression.

Immunogen: Recombinant full length protein of K-Ras (G13D).

Tested applications: ELISA, WB, IHC

Recommended dilutions:

ELISA 1:100-1:5000

WB 1:100-1:1000

IHC 1:50-1:100

Concentration: 1 mg/ml

Host: mouse

Clonality: Monoclonal

Isotype: IgG2b

Purity: Purified from ascites

Format: Liquid

Storage buffer:

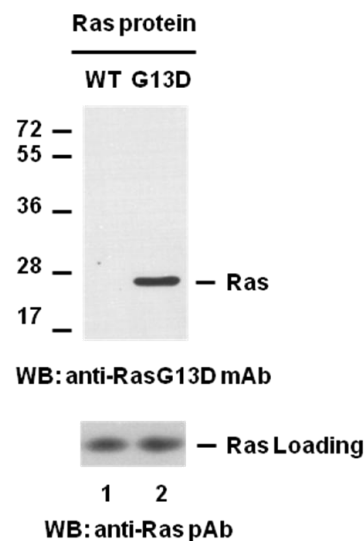
Preservative: no

Constituents: PBS (without Mg²⁺ and Ca²⁺), pH 7.4, 150 mM NaCl, 50% glycerol

Species Reactivity: RasG13D antibody recognizes RasG13D proteins of vertebrates.

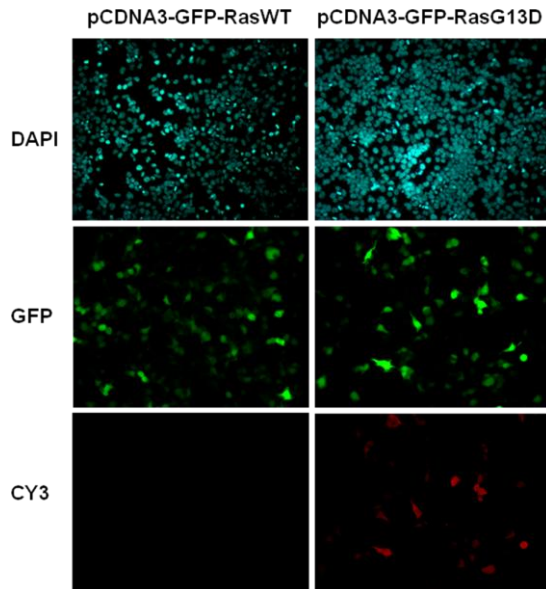
Storage Conditions: Store at -20 °C. Avoid freeze / thaw cycles

Western blot:



Western blot analysis of recombinant K-Ras WT and G13D proteins with anti-Ras(G13D) monoclonal antibody. Equal amount of purified Ras WT (lane 1, Cat# 10172) and G13D (lane 2, Cat. # 10155) proteins were loaded and blotted with anti-RasG13D mouse monoclonal antibody (Cat. # 26038) (top panel). Input control (bottom panel) was blotted with rabbit polyclonal anti-Ras antibody (Cat. # 21021).

Immunofluorescence:



Immunofluorescence of cell expressing Ras(G13D) protein with anti-Ras(G13D) antibody. HEK293T cells were transfected with pCDNA3-GFP-Ras(WT) plasmid (left column) or pCDNA3-GFP-Ras(G13D) plasmid (right column), then fixed and stained with anti-Ras(G13D) monoclonal antibody (Cat. # 26038).